





## YILINK Lithium Battery &Voltronic Inverter Set Up Guide

1. The purpose of this document is to explain the set up guidelines for the lithium battery of YILINK and the inverter of Voltronic Axpert series;

### 2. Check List

YILINK Battery	Power Cable (25mm <sup>2</sup> )	Communication Cable (RJ45-RJ45)	Voltronic Axpert Series Inverter
			

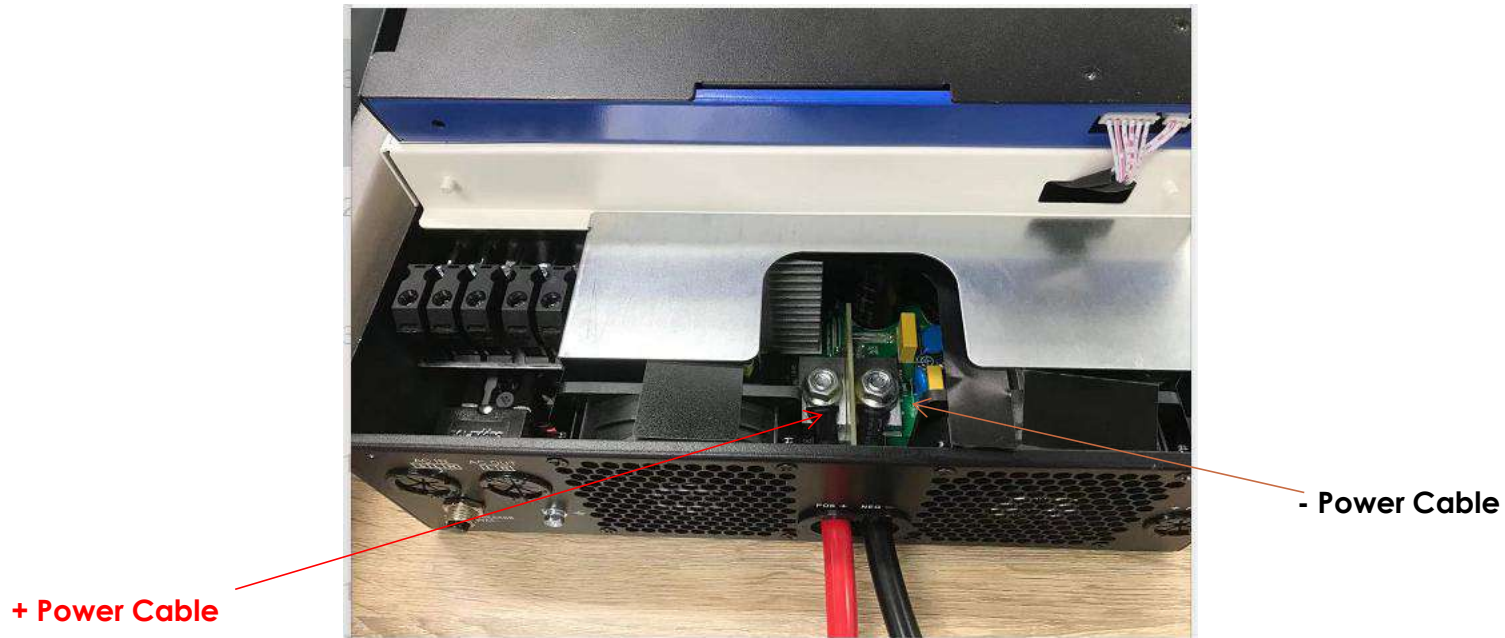
**NOTE**

- When you manually make the communication cable, the PIN assignment need to be pay attentioned. Please check APPENDIX 1 for battery and inverter PIN assignment.

### 3. Setup steps

#### Step 1: Connect the power cable to the inverter

To keep the inverter and battery completely off, first connect the power cable to the inverter.



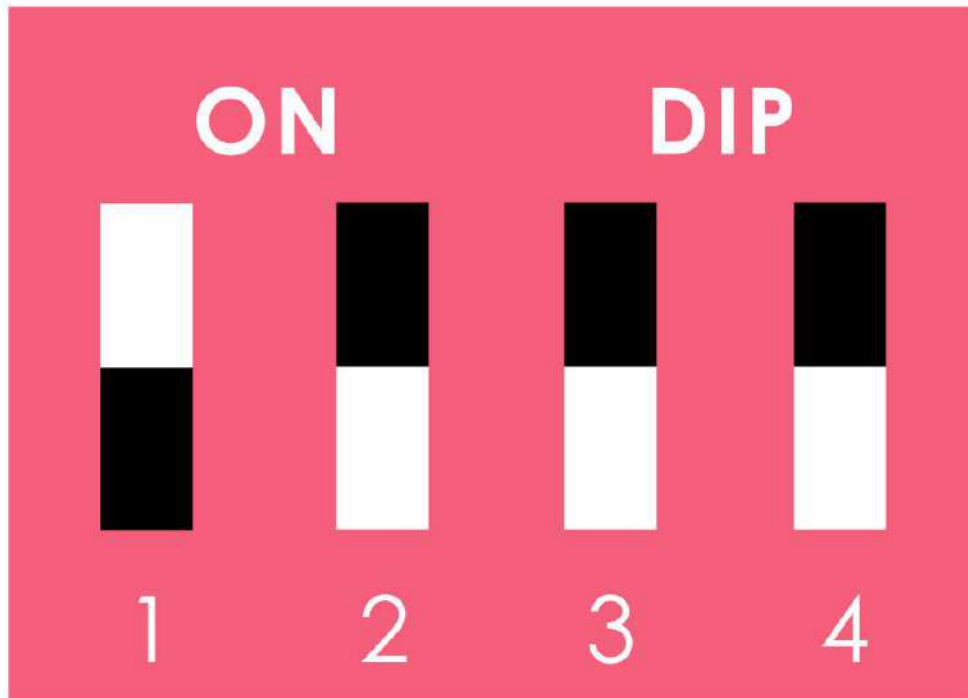
**NOTE**

- There is a label on the power cable to ensure that the polarity connection between inverter and battery is correct, not reversed.

### Step 2 : Dial DIP switch on master

Make sure master battery is dialed as below method. In parallel, please check APPENDIX 2 for all battery dial addresses.

ON OFF OFF OFF



### Step 3 : Cable connect in battery

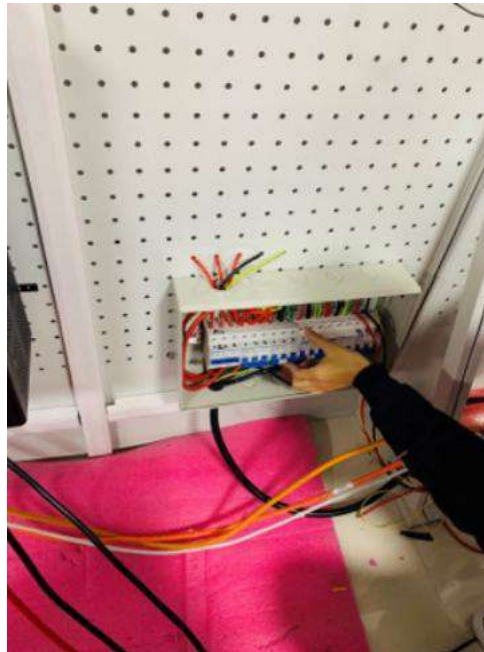
Keep battery off, connect power cable to battery.

Red cable is connected to the positive pole of the battery, Black cable is connected to the negative pole of the battery;



#### **Step 4 : Breaker between inverter and battery**

Connect DC breaker between inverter and battery to protect .



**NOTE**

- Confirm the use of suitable circuit breaker.

### Step 5 :Connect the communication Cable

Keep battery off, connect communication cable to battery and inverter.



#### NOTE

- Connect the RS485 port of the battery to the Li-ion port of the inverter through the communication cable
- Please check APPENDIX 1 for pin definition of communication cable.

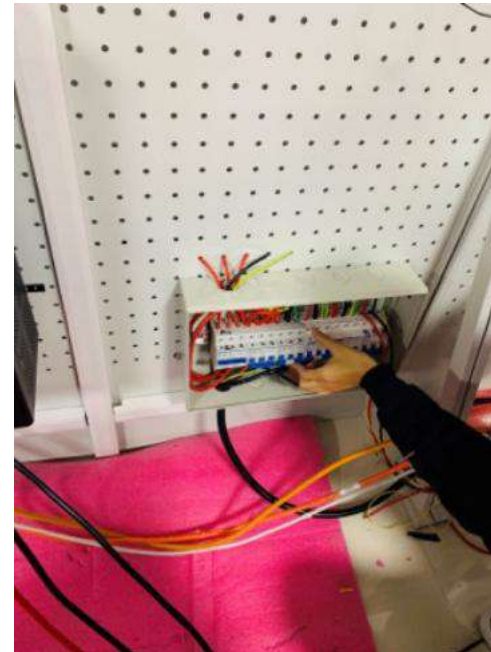
**Step 6: Turn on battery**

Press the power switch on the battery panel, the power indicator will light up and battery will turned on.



### Step 7: Turn on the inverter&DC breaker

Open the circuit breaker after pressing the inverter on key

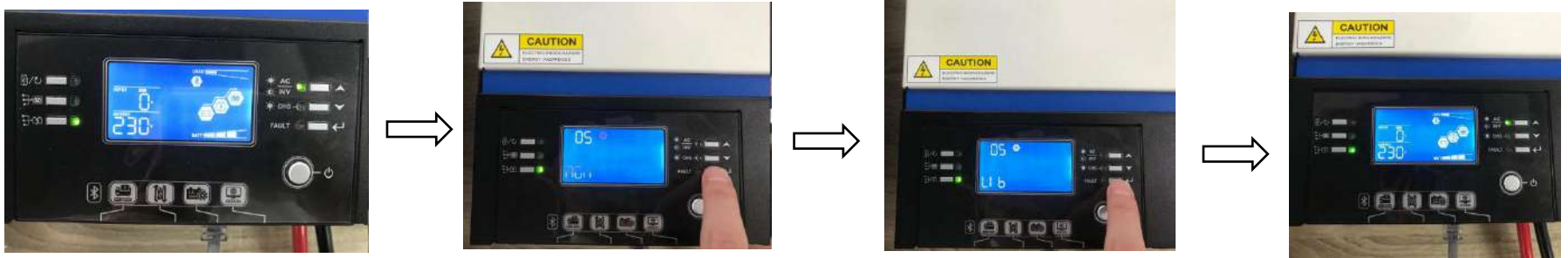




### Step 8: Setup the battery type in the inverter.

Turn on the inverter and count down 6 seconds to enter the main interface,

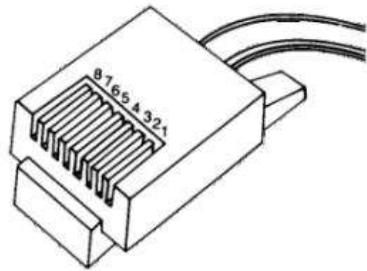
- After pressing and holding “↵” button for 3 seconds, the unit will enter the Setup Mode.
- Press“ ▼ ” button,When the display shows “05”, Press“ ↵ ”button,then When Press“ ▼ ” button Battery type selection,when the display shows “Li b”,Press“ ↵ ”button.
- If communication between the inverter and battery is successful, the battery icon “🔋” on LCD display will flash. Generally speaking, it will take longer than 1 minute to establish communication.



**APPENDIX 1**

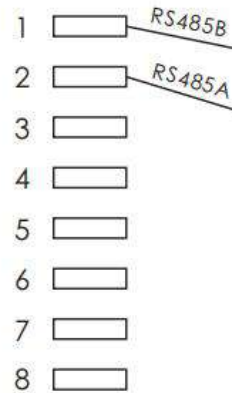
**YILINK Battery  
RJ45(RS485) Port**

**Voltronic Inverter  
RJ45(RS485) Port**

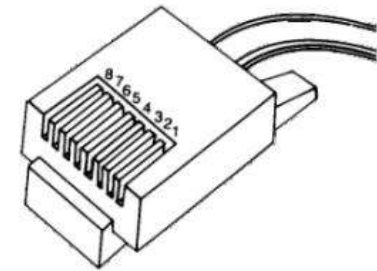
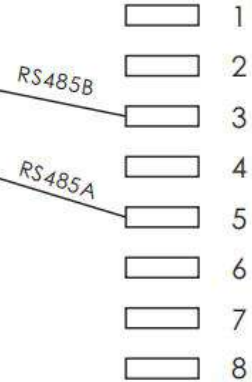


RJ45

**Battery**



**Inverter**



RJ45



## APPENDIX 2

While in parallel communication, the dial-up addresses of battery module are 1,2,3,4.....14,15, where 1 stands for the main engine, the data of other batteries are uploaded to the main engine conducts unified uploading. The host computer with dial-up code of 1 to connect with upper computer.

